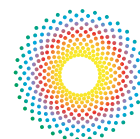


# FOCUS ON YOUR **BRIGHT NEW FUTURE**

---

ENROLL IN THE OPHTHALMIC TECHNICIAN  
EDUCATION PROGRAM AT THE SOUTHERN  
CALIFORNIA EYE INSTITUTE



**SCEI** SOUTHERN  
CALIFORNIA  
EYE INSTITUTE

# WELCOME TO OPPORTUNITY

If you dream of a rewarding career as part of a professional healthcare team where you can help people achieve a better quality of life, we invite you to consider becoming an ophthalmic technician.

At the Southern California Eye Institute (SCEI), our Ophthalmic Technician Education Program (OTEP) is one of only 14 such programs nationwide—and the only one in California that prepares you with the skills to become an ophthalmic technician, a career that is in very high demand.

We are committed to training the next generation of allied healthcare professionals to serve the eye care needs of the community. As a student at SCEI, you will experience a comprehensive program designed to give you every advantage in pursuing your career.

I look forward to your being part of SCEI and taking the next step in your new future.



**Rohit Varma, MD, MPH**  
Founding Director  
Southern California Eye Institute

# ABOUT SCEI

The Southern California Eye Institute provides the highest level of vision care, using the latest technology and treatments to deliver the best possible outcomes to patients. Our expert physician-scientists are advancing innovations in stem cell and regenerative therapies, artificial intelligence and bioelectronic implants to further the prevention, early detection and treatment of eye diseases and conditions.

SCEI is part of CHA Hollywood Presbyterian Medical Center, a nationally recognized acute care facility that has cared for Hollywood and its surrounding communities since 1924. The medical center is a member of CHA Health Systems, a dynamic global healthcare organization in seven countries around the world.

The Ophthalmic Technician Education Program at the Southern California Eye Institute does not discriminate on the basis of race, color, religion, national origin, sex, sexual orientation, gender identity, age, or disabilities in its admission policies.

# A REWARDING CAREER

The Ophthalmic Technician Education Program (OTEP) at SCEI prepares highly skilled allied health professionals to serve the eye care needs of individuals of all ages.

Ophthalmic technicians are essential members of a professional vision care team. In this important position, you will be responsible for completing the initial portion of a patient's eye exam, including taking patient histories and conducting a variety of tests and procedures that inform ophthalmologists in the diagnosis and treatment of eye conditions. You also will work closely with patients and their families to help them understand their vision conditions.

# THE OTEP PROGRAM

Through OTEP's series of convenient online courses, you learn the structure and function of the visual system and a broad range of diagnostic tests and procedures, along with how to care for and educate patients and to fulfill your role on the healthcare team.

Your coursework is supplemented by clinical rotations that take place at SCEI and our affiliated health centers. In these hands-on sessions, you gain real-world experience in the testing, diagnosis and treatment of eye conditions, under close supervision of ophthalmology professionals.

In just 12 months, you can be on your way to an exciting new career.



**OTEP at SCEI is the ONLY program in California that prepares you with the skills to become an ophthalmic technician.**

# OPEP CURRICULUM

OPEP online courses take place on Tuesdays and Thursdays from 6 pm to 8 pm, for 4 hours of instruction per week. Course notes, technical skill simulations, educational videos, and recordings of lectures are posted on Canvas and are available for viewing 24/7.

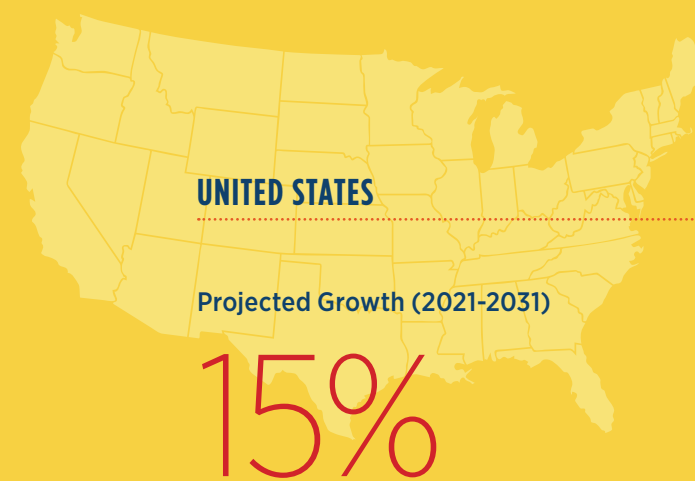
COURSE	TITLE
Module 1	Ocular Anatomy and Physiology
Module 2	Visual Assessment
Module 3	Lensometry
Module 4	Keratometry and Contact Lenses
Module 5	Refraction and Optics
Module 6	Ocular Motility
Module 7	Pupillary Assessment
Module 8	Visual Fields
Module 9	Glaucoma and Tonometry
Module 10	Microbiology
Module 11	Pharmacology
Module 12	General Medical Knowledge
Module 13	Ocular Pathologies
Module 14	Ophthalmic Imaging
Module 15	History Taking
Module 16	Supplemental Skills
Module 17	Surgical Assisting
Module 18	Medical Ethics, Legal, and Regulatory Issues

**Clinical Rotations:** Students also will spend 15 hours a week in clinical rotations, practicing professional and technical skills learned in class. The scheduling of clinic time is flexible, offering you the ability to work part-time while enrolled in OPEP if you desire. Small class sizes ensure you receive the personal attention to learn at your best.



# EMPLOYMENT TRENDS: HOT JOB!

Ophthalmic Technicians are in demand—and that demand is growing.



U.S. source: Bureau of Labor Statistics. California source: Projections Central.

## OTEP PREREQUISITES

All applicants to SCEI's Ophthalmic Technician Education Program must have a high school diploma or a high school equivalent certificate (GED) by the start date of the program.

## COURSE REQUIREMENTS

Students are required to attend a minimum of 80% of their online courses to maintain good academic standing in OTEP. In addition, you must maintain a minimum quarterly grade of C (70%) in and receive a passing grade in all clinical rotations. Homework, quizzes and tests are mandatory for each course and must be completed and submitted by set deadlines.

## GRADUATION REQUIREMENTS

OTEP is an educational and workforce training program that prepares highly skilled and compassionate ophthalmic technicians to become key members of the eyecare team. To successfully complete the program and graduate from OTEP, students must:

1. Achieve a minimum of 70 % in all OTEP didactic courses
2. Attend a minimum of 80% of each online course sessions
3. Achieve a passing grade in all clinical rotations
4. Complete 750 hours of supervised clinical training
5. Participate in 5 hours of community outreach activities
6. Abide by OTEP's Code of Professional Conduct

**#3**  
**CALIFORNIA**  
Ranking  
among states  
for Ophthalmic  
Technician  
Employment

## TUITION FEE

Please contact OTEP at [carlos.lastra@sceyes.org](mailto:carlos.lastra@sceyes.org) for information on tuition costs. Upon acceptance into the program, a \$350.00 non-refundable deposit must be made to secure your position.

## OPENING A DOOR: CERTIFICATION

OTEP is in the process of accreditation by the International Council of Accreditation (ICA)\*. OTEP graduates are eligible to qualify for certification from the International Joint Commission on Allied Health Personnel in Ophthalmology (IJCAHPO) after passing all examinations. IJCAHPO's mission is to promote global eye health and prevent blindness through training program accreditation, education and the certification of allied ophthalmic personnel.

Having both OTEP training and the IJCAHPO stamp of approval tells potential employers you would be an asset to their team. Learn more about JCAHPO certification at [www.jcahpo.org](http://www.jcahpo.org).

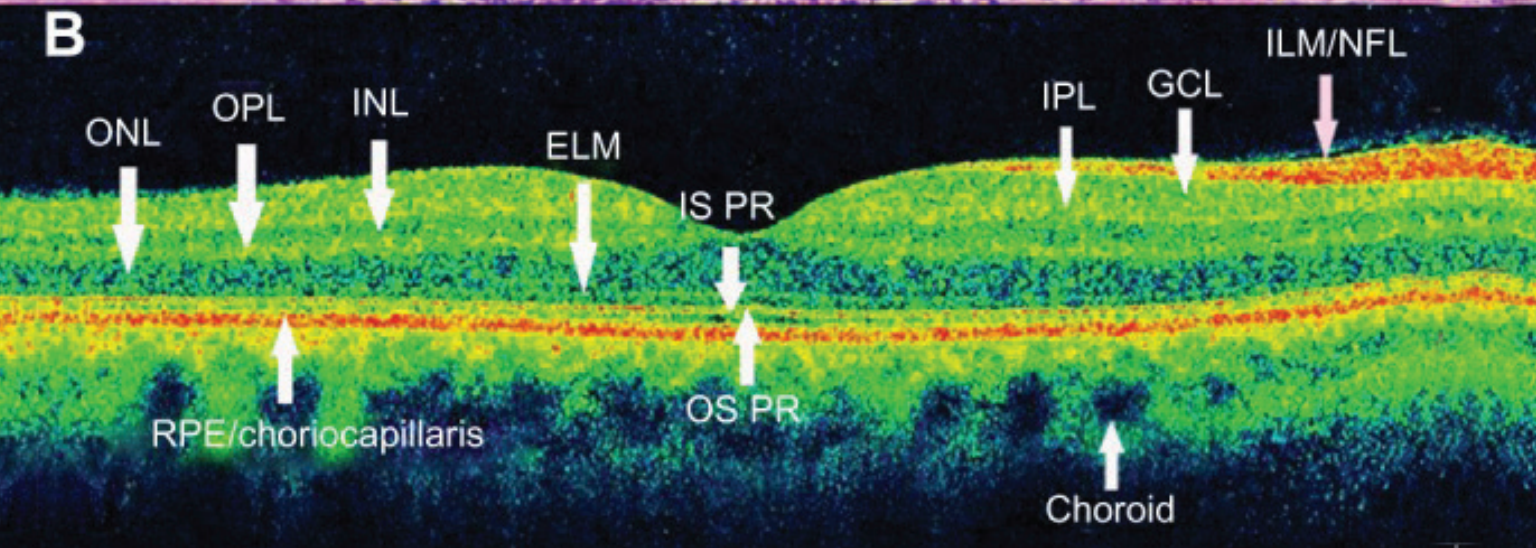
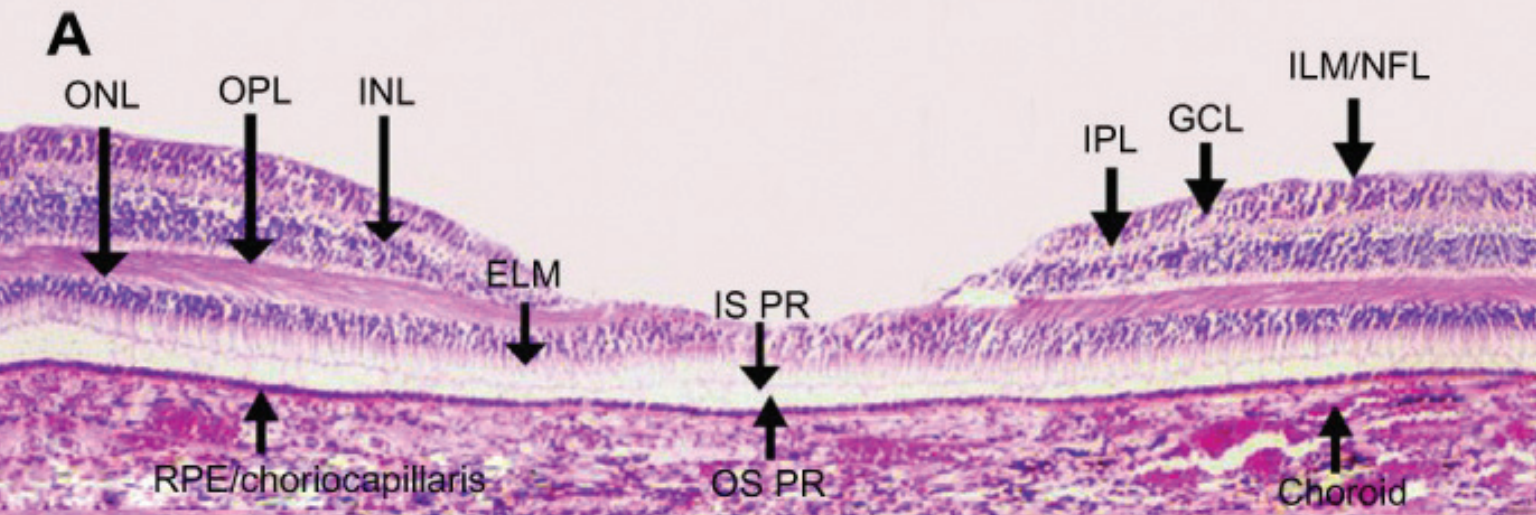
\*ICA: 2025 Woodlane Dr., St. Paul MN 55125-2998  
(651) 731-7243 | [www.icaccreditation.org](http://www.icaccreditation.org)



**U.S. News & World Report**  
ranks Ophthalmic Technician as 15th  
**BEST JOB**  
Without a College Degree nationwide.

## START YOUR FUTURE NOW. APPLY TO OTEP TODAY.

The OTEP application is online at [sceyes.org/otep](http://sceyes.org/otep). There is no fee to apply. For any questions, please contact OTEP Coordinator Dr. Carlos Lastra Gonzalez, at [carlos.lastra@sceyes.org](mailto:carlos.lastra@sceyes.org).



Shown above are layers of the retina, captured by optical coherence tomography (OCT).



**SOUTHERN CALIFORNIA EYE INSTITUTE**

**sceyes.org | 1.833.270.EYES (3937)**

Locations in Los Angeles, Pasadena,  
and Bakersfield

**Los Angeles Headquarters:**

CHA Hollywood Presbyterian Medical Center  
1300 N. Vermont Avenue, Suite 101  
Los Angeles, CA 90027